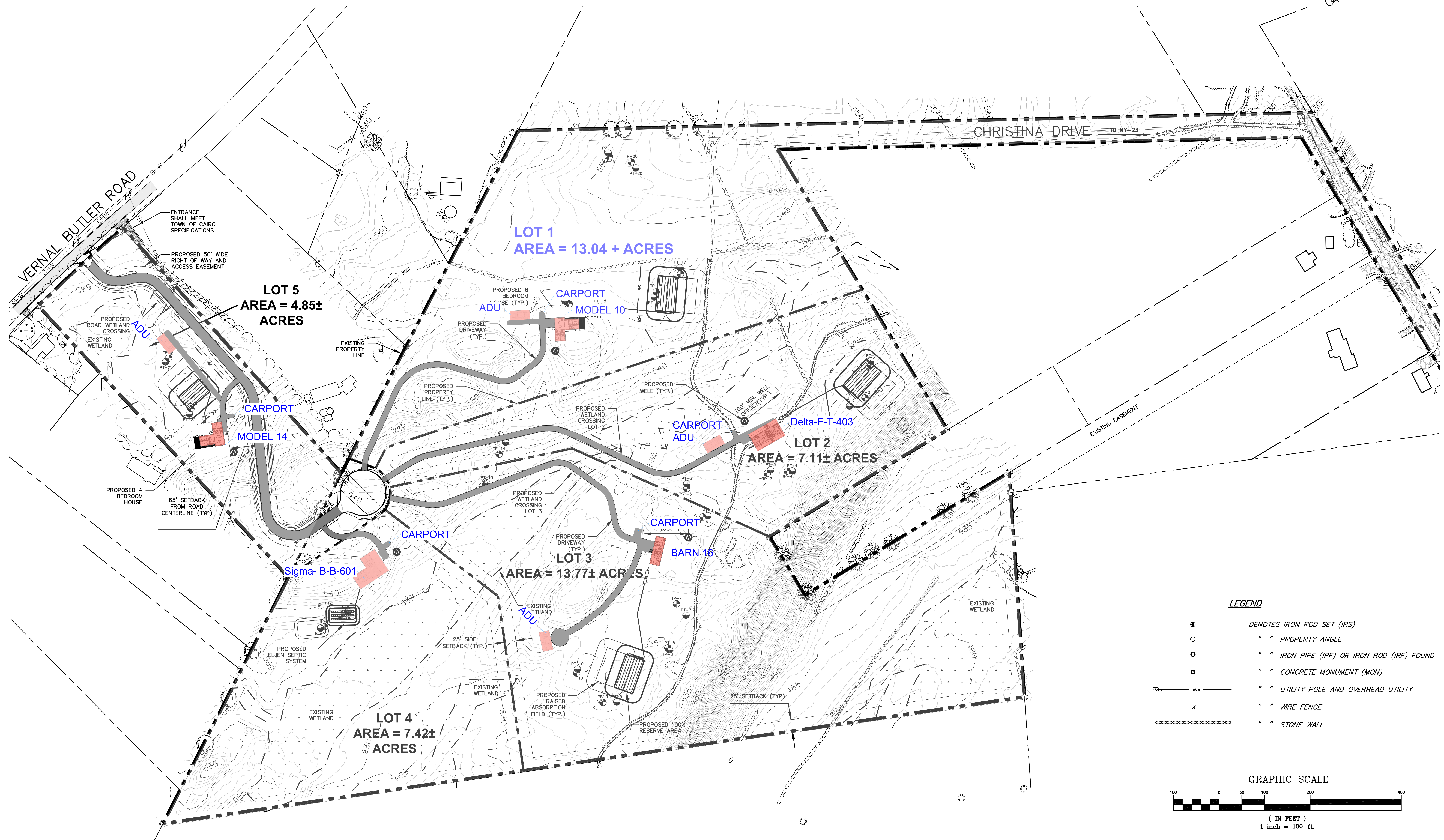
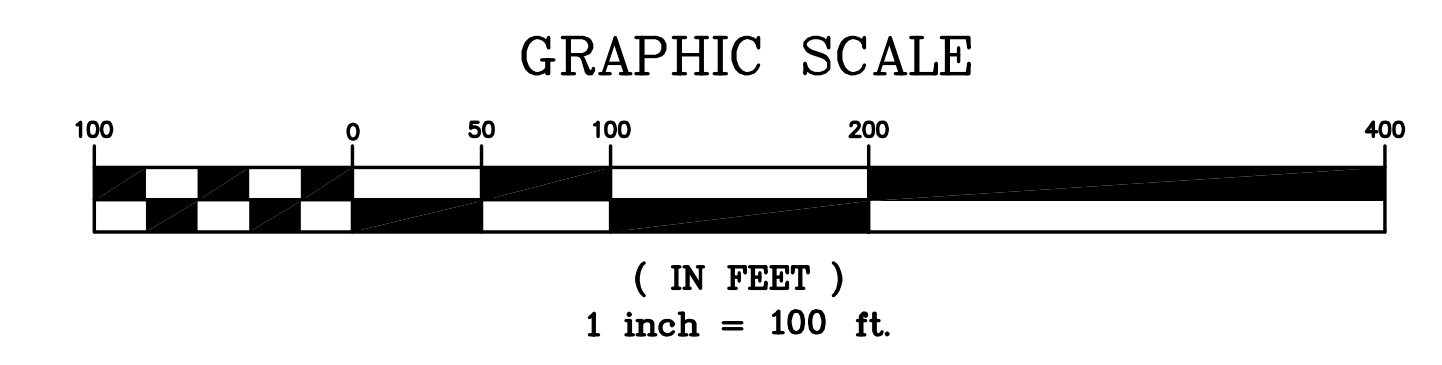


NAD 83 NYS EAST ZONE (US FT)



- LEGEND**
- DENOTES IRON ROD SET (IRS)
  - " " PROPERTY ANGLE
  - " " IRON PIPE (IPF) OR IRON ROD (IRF) FOUND
  - " " CONCRETE MONUMENT (MON)
  - " " UTILITY POLE AND OVERHEAD UTILITY
  - x— " " WIRE FENCE
  - " " STONE WALL



6/21/2024 11:41:00 AM 325523 PS.DWG  
 User: a.habib@ka.com  
 Plot: 1/4/24 11:41:00 AM 325523 PS.DWG  
 File: L:\2023\325523 Monterey Valley-Sub\Drawings\325523\_PS.DWG

**KAATERSKILL ASSOCIATES**  
 SURVEYORS-ARCHITECTS-ENGINEERS-LANDSCAPE ARCHITECTS-CONSTRUCTION MANAGERS  
 CAIRO, NY (518) 622-9667 WWW.KEAENG.COM

REV	DATE	DESCRIPTION	APP.

**MONTEREY VALLEY SUBDIVISION**  
 VERNAL BUTLER ROAD  
 TOWN OF CAIRO  
 GREENE COUNTY, NY  
**SITE PLAN**

PROJECT:	325523
DATE:	1/4/24
SCALE:	AS NOTED
DRAWN BY:	ANH/RAP
DESIGNED BY:	DCE/SMO
CHECKED BY:	DCE
FILE:	325523 PS.DWG

DRAWING:  
**ENG-3**  
 SHEET 3 OF 10

UNLICENSED ARCHITECTS AND ENGINEERS ARE PROHIBITED FROM USING THE KAATERSKILL ASSOCIATES LOGO OR ANY OTHER MARKETING MATERIALS THAT IMPLY AFFILIATION WITH KAATERSKILL ASSOCIATES WITHOUT THE WRITTEN CONSENT OF KAATERSKILL ASSOCIATES. ANY VIOLATION OF THESE TERMS SHALL BE CONSIDERED A VIOLATION OF THE PROFESSIONAL LAND SURVEYING AND PROFESSIONAL ENGINEERING LAWS OF THE STATE OF NEW YORK. KAATERSKILL ASSOCIATES IS A MEMBER OF THE NEW YORK STATE EDUCATION LAW FOR ANY PERSON TO ALTER THESE PLANS, SPECIFICATIONS OR REPORTS IN ANY WAY UNLESS ACTING UNDER THE DIRECTION OF A LICENSED PROFESSIONAL ARCHITECT, ENGINEER, LANDSCAPE ARCHITECT, SURVEYOR. THIS SHEET HAS BEEN PREPARED IN ACCORDANCE WITH THE CODE OF PRACTICE FOR LAND SURVEYING OF THE NEW YORK STATE ASSOCIATION OF PROFESSIONAL LAND SURVEYORS, DATED JULY 18, 1997. COPYRIGHT 2024 KAATERSKILL ASSOCIATES.